



Elysium 3DxSUITE™

The True Interoperability Platform



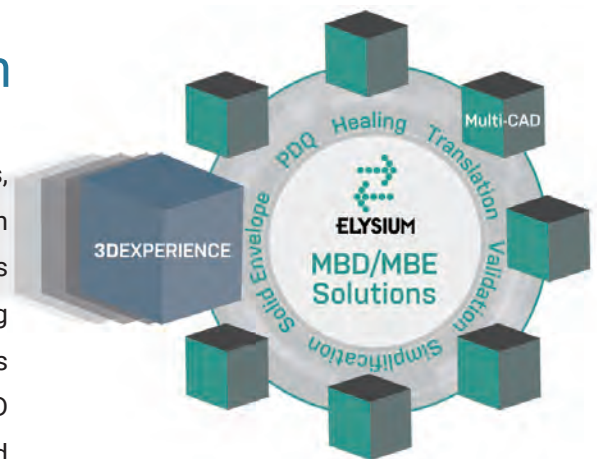
3DEXPERIENCE Translation

Seamlessly to and from 3DEXPERIENCE

Fast, accurate, and compliant transfer of 3DEXPERIENCE data in Multi-CAD environments.

Achieve MBD/MBE with Dassault Systèmes' 3DEXPERIENCE platform

The integration of Elysium solutions enables automated quality checks, geometry/PMI/attribute validation, and geometry simplification within the 3DEXPERIENCE modeling, simulation, and PLM ecosystem. This enhanced functionality is equally applicable to external 3D engineering data, that can now be brought into the 3DEXPERIENCE platform as tested and compliant. Streamline your model-based workflows for 3D master models and derivatives in development, manufacturing and OEM, and supplier collaboration.



PDQ Check



Data Repair



Validation

**SOFTWARE
PARTNER**
V6 Partner



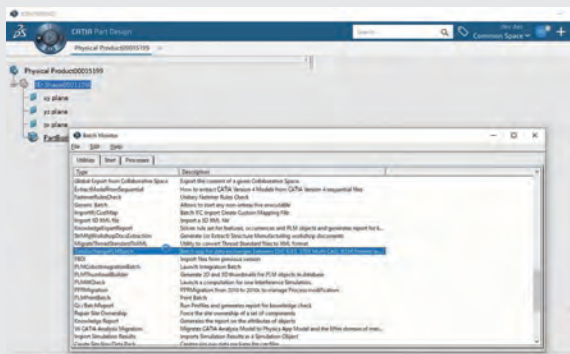
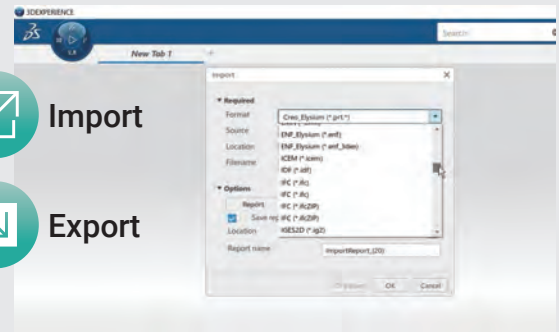
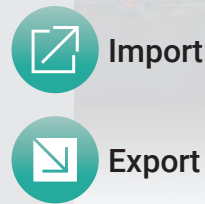
Firm and Strategic Partnership with Dassault Systèmes

Elysium's deeper integration with 3DEXPERIENCE, based on our firm partnership with Dassault Systèmes, enables a unified product data sharing ecosystem. With XCAD platform provided by Dassault Systèmes, Elysium solutions work as 3DEXPERIENCE native function.

Capabilities – Key Features

Import/Export in 3DEXPERIENCE

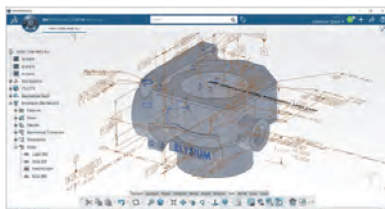
Run the data translation from the import/export menu in 3DEXPERIENCE simply by selecting the file format.



Batch Execution

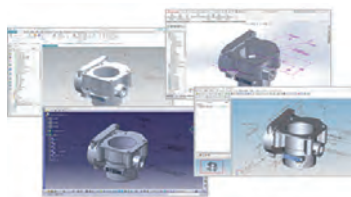
Enable batch processing through “DataExchangePLMBatch” in 3DEXPERIENCE.

Use Cases



3DEXPERIENCE Data

Translation to/from other formats



TDP (Technical Data Package)



CAD Validation



Geometry Simplification

